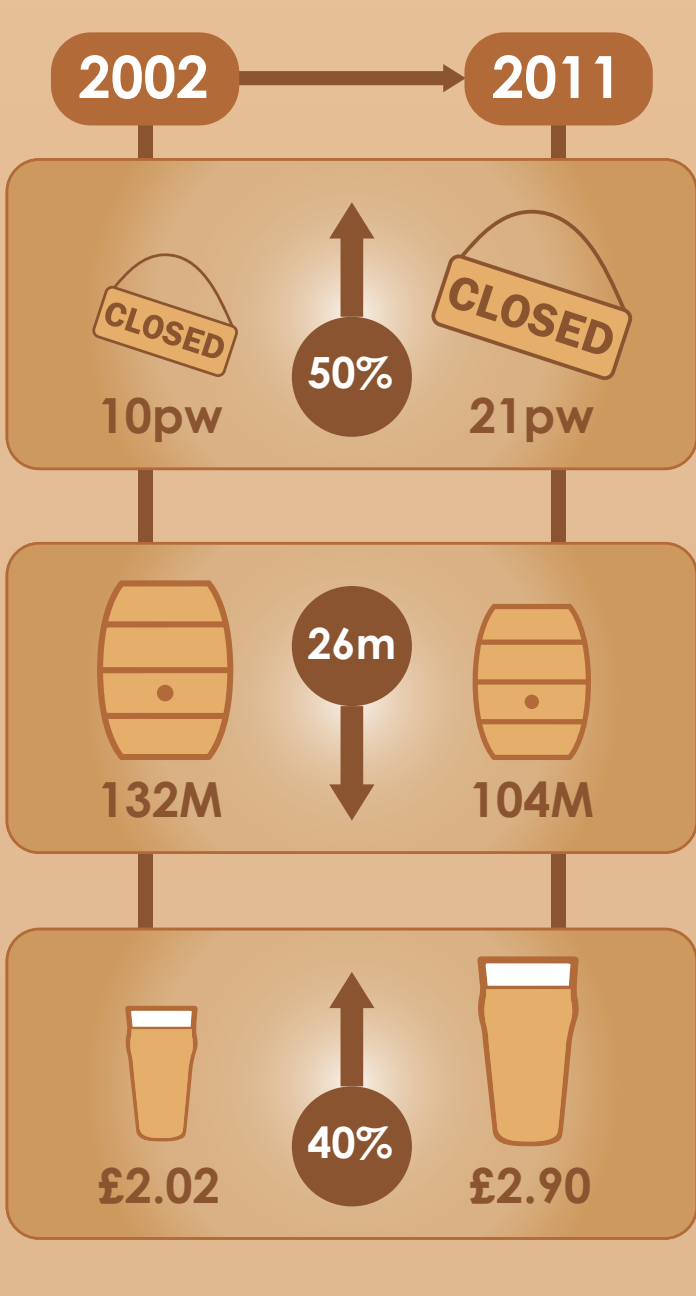


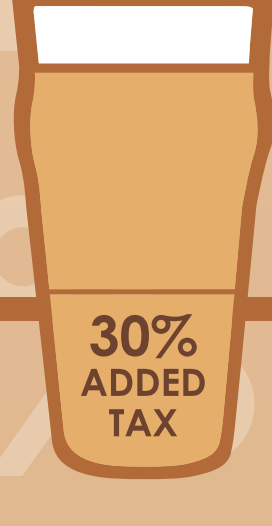
The rate of closures increased significantly from the year 2007 when the global recession began and the smoking ban was introduced



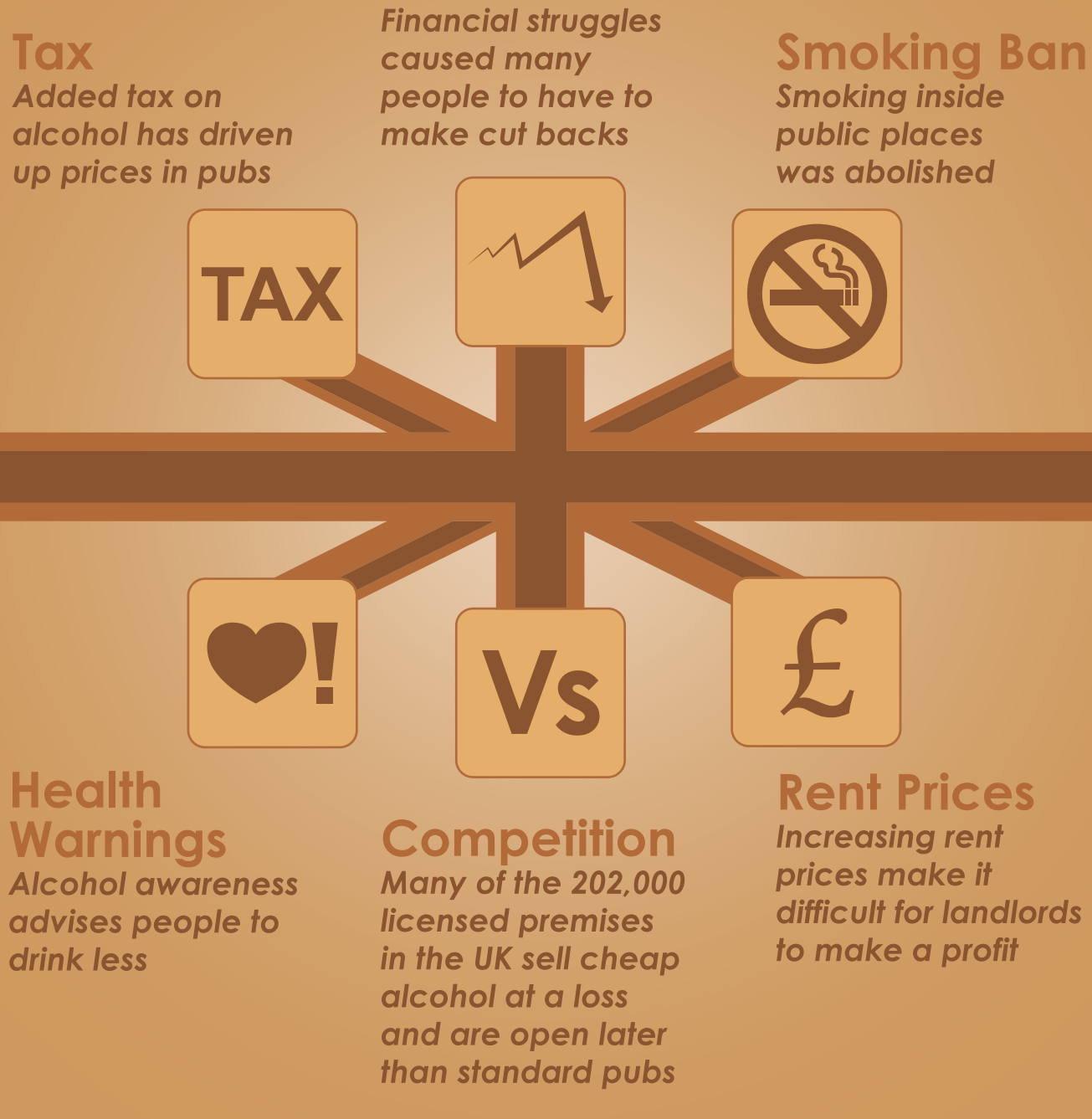
21 pubs are closing every week which is more than double the amount it was 10 years ago

As a result, individual barrel sales have dropped by 26 million

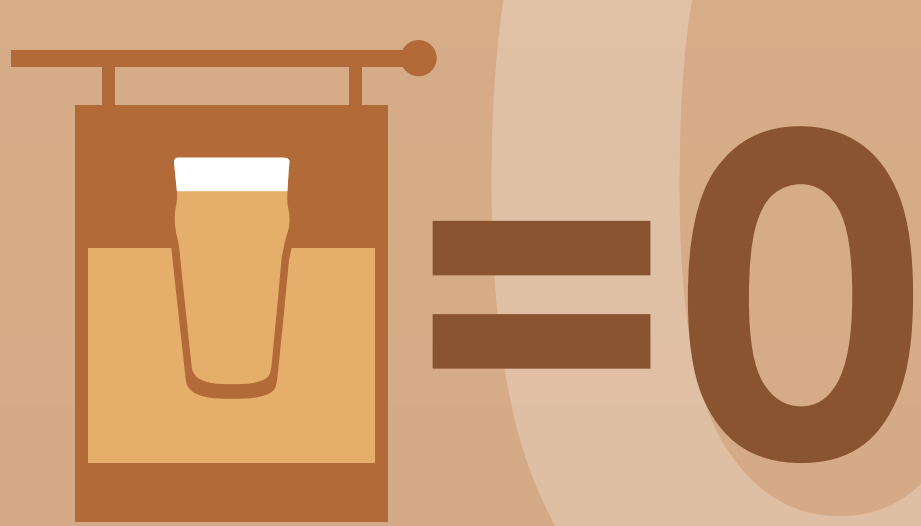
The price of a pint has also risen by 40%



POSSIBLE CAUSES FOR PUB CLOSURES



BY THE YEAR **2058** THE UK COULD BE PUBLESS



If the current trends continue the UK could face losing all of its pubs

WHAT CAN BE DONE IF YOUR LOCAL PUB IS FACING CLOSURE?

- Visit Your Local Pub**
Help local pubs prosper by visiting them
- Make Yourself Heard**
Write letters, contact your local MP and let people know that help is needed
- Carry Out a Survey**
Find out whether people feel the same way about the situation
- Bring People Together**
There is strength in numbers so the more people against a possible closure the better
- Start a Petition**
Proving your local pubs importance may help to combat a possible closure